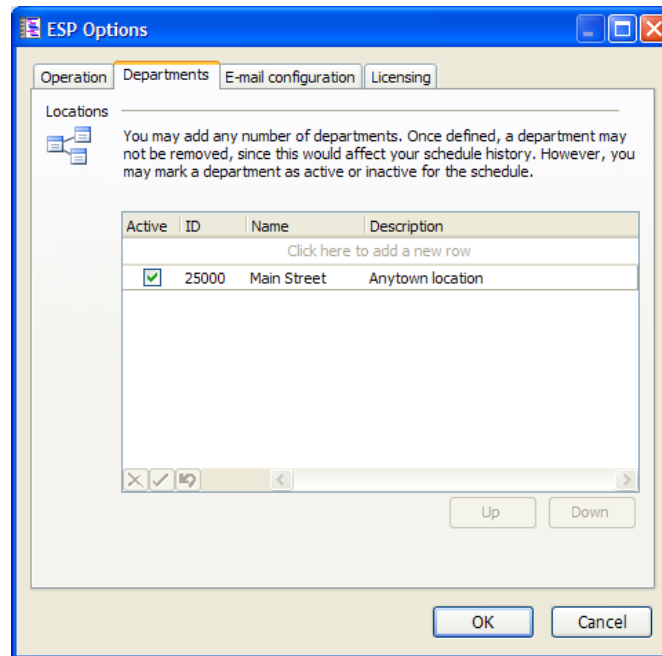


Registering your ESP License

ThoughtWorks
Software Solutions

Your license of ESP will need to be registered if any of the following is true:

- You are installing a new copy of ESP for the first time
- You are extending the temporary expiry date of ESP for an evaluation copy
- You are adding more stores to a computer that already has ESP
- You are reinstalling after a computer crash



To begin, start ESP and open the data file you wish to license. From the *Home* form, choose *Tools | Options* from the menu, and select the *Departments* tab as shown above. Enter information for each column. Note that the ID must uniquely identify your location, and is normally your store number.

Once you have defined your store and department information, select the *Licensing* tab.

If you are licensing the software on the current computer, click the **This computer** button on the left side to automatically fill in the appropriate information.

Fill out the remaining information fields as described below:

Machine ID: Do not change this. If you accidentally overwrite this field, click the *Reset* button to reset it back to the correct value

License name: Enter your company or corporate name. If you are a franchised location it should be the name of the company that your franchisee uses.

Site name: This must be the same as the Department ID that you entered on the Departments tab

Site count: Set this to 1 unless you are scheduling multi-department or satellite locations that share employees with your primary location

Home path: This should be filled in for you automatically with the path to your ESP data file. You should not change this unless you are familiar with ESP data files and their location.

The screenshot shows the 'ESP Options' dialog box with the 'Licensing' tab selected. The 'License' section contains the following fields and values:

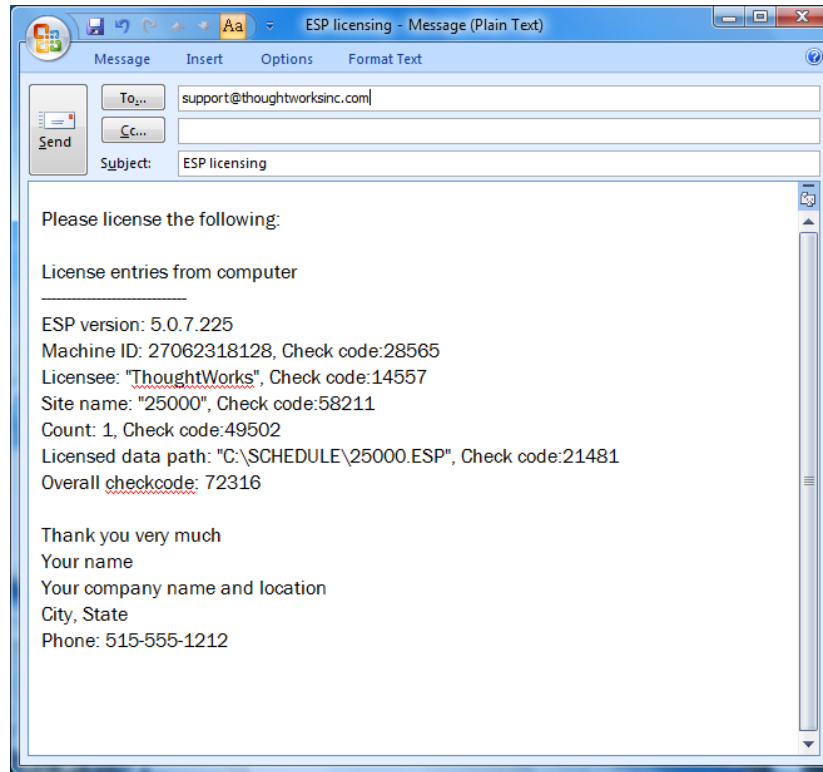
Field	Value	Checksum
Machine ID	27062318128	28565
License name	ThoughtWorks	14557
Site name	25000	58211
Site count	1	49502
Home path	C:\SCHEDULE\25000.ESP	21481
Browse...		72316

Below the fields are four buttons: 'Copy to clipboard', 'Reset', 'This computer', and 'Enter validation code'. To the right of these buttons is a 'Status' section that reads 'Invalid license'. At the bottom of the dialog are 'OK' and 'Cancel' buttons.

Once you have entered this information, click the *Copy to clipboard* button. This will allow you to paste this information into an e-mail message and send it to ThoughtWorks.

Sending your information to ThoughtWorks

Create a new mail message using your e-mail software, with support@thoughtworksinc.com as the addressee. In the body of the message, paste your information by pressing *Ctrl-V*, or by clicking *Edit | Paste* from the menu. Your e-mail should look something like this:



Be sure to include your own name, location and phone number, and send your e-mail to:

support@thoughtworksinc.com

We will respond with a validation code. When you receive the validation code, enter it on the licensing screen by clicking the *Enter validation code* button.

If you have any questions, or need any help with these procedures please don't hesitate to contact us.

ThoughtWorks Software Solutions

Phone: 1-905-628-2944
E-mail: support@thoughtworksinc.com
Web: www.thoughtworksinc.com